

Neuroleadership Program 2022 Edition

Level I: March 15th, 2022 – June 21st, 2022

Level II: 20th September, 2022 – 13th December, 2022

NeuroLeadership Program

One Program & Two Course Levels

In this new edition PWN Lisbon rethinks the concept of Leadership and launches a **NEUROLEADERSHIP PROGRAM**. A new strategic vision towards the co-creation of a multigeneration & multisectoral pipeline network.

The Program has 2 levels:

- **Level I: HOPE**
 - *Brain, mind, body – neurosciences in action*
- **Level II: DRUCKER'S CHOICE**
 - *Life design & talent management*

Level I, Brain, mind, body - neurosciences in Action, is a **15 weeks course, with weekly sessions**. The course is **mainly online***, with synchronous and asynchronous learning opportunities. Weekly sessions, will occur on Tuesdays from 7:00 p.m. to 9:00 pm.

Level II, Life Design & Talent Management, is a **13 weeks course, with weekly sessions**. The course is **mainly online***, with synchronous and asynchronous learning opportunities. Weekly sessions, will occur on Tuesdays from 7:00 p.m. to 9:00 pm.

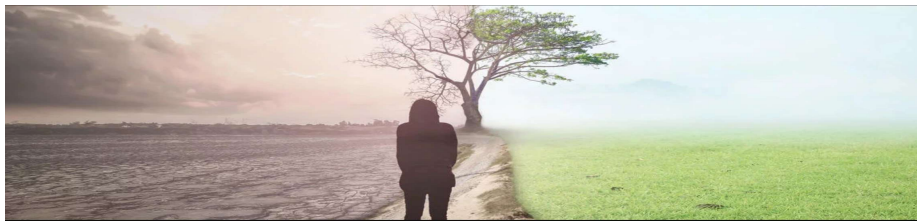
(*) In person events depending on pandemics restrictions in place

NeuroLeadership Program

One Program / Two Course Levels

Level I: HOPE

Brain, mind, body – neurosciences in action

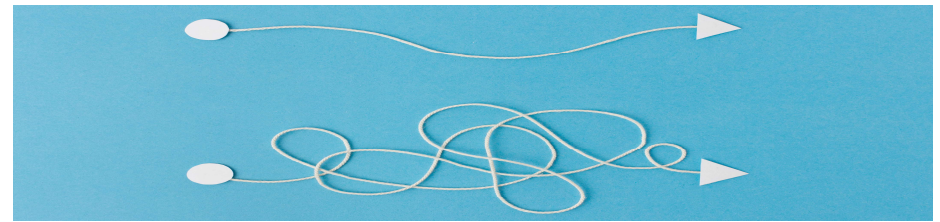


Level I: Hope - Brain, mind, body - neurosciences in Action, is a **15 weeks course**, with weekly sessions.

The course is **mainly online***, with synchronous and asynchronous learning opportunities. Weekly sessions, will occur on Tuesdays from 7:00 p.m. to 9:00 pm.

Level II: DRUCKER'S CHOICE

Life design & talent management



Level II: Drucker's Choice - Life Design & Talent Management, is a **13 weeks course**, with weekly sessions.

The course is **mainly online***, with synchronous and asynchronous learning opportunities. Weekly sessions, will occur on Tuesdays from 7:00 p.m. to 9:00 pm.

NeuroLeadership Program

Target Group (Both levels)

In this new edition PWN Lisbon rethinks the concept of Leadership and launches a **NEUROLEADERSHIP PROGRAM**. A **new strategic vision towards the co-creation of a multigeneration & multisectoral pipeline network**.



- Professionals aiming to progress into management and leadership roles
- High potential professionals, identified by their companies to access to leadership roles
- Professionals going on a reflection about their own career

NeuroLeadership Program

The Application Process & Cost

Application process deadline varies per Course. Cost per Course / Level is 210€. Conditions for application presented below:



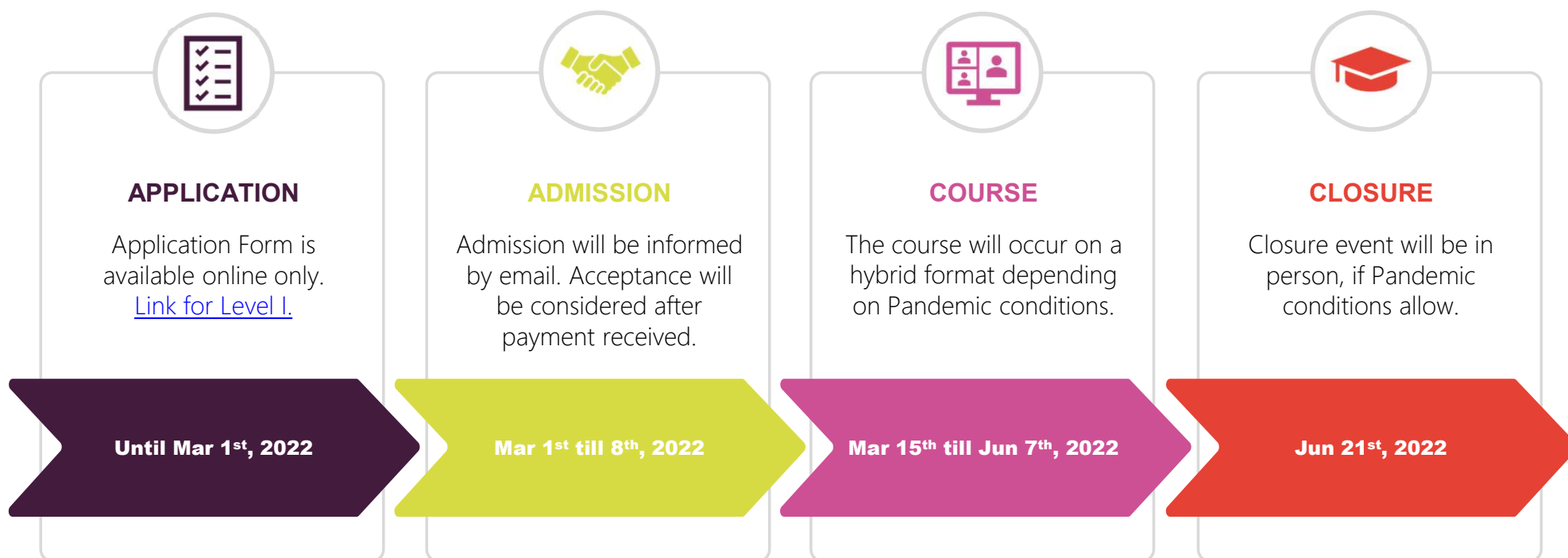
- Member of PWN Lisbon (compulsory)
- Minimum experience of 3 years in leadership roles (preferential)
- Frequency of NeuroLeadership Course – level I preferential to attend level II

Level I: HOPE

Brain, mind, body – neurosciences in action

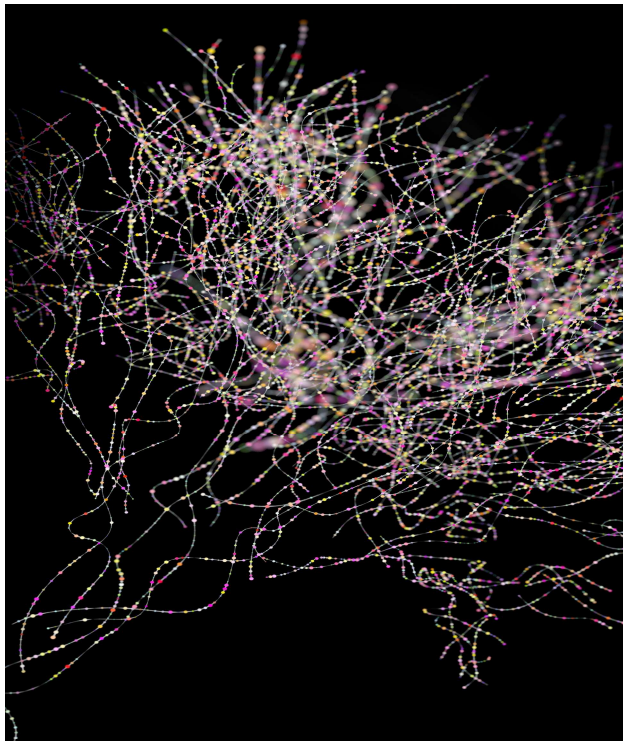
NeuroLeadership Program

Level I Brain, mind, body – neurosciences in action – Course Timeline



NeuroLeadership Program

Level I Brain, mind, body – neurosciences in action – Program Structure



Module I: Focus on You. Purpose – Self Leadership

- Keywords: Neuroplasticity, Self-consciousness, Motivation, Emotional Intelligence, Resilience, Mind & Body, Food & Performance

Module II: Focus on others. Empathy – Collaborative Leadership

- Keywords: Emotional Intelligence, Empathy, Design Thinking, Behavioral Science

Module III: Focus on the World. Awareness – Global Leadership

- Keywords: Strategic thinking

Module IV: Focus on equal opportunities

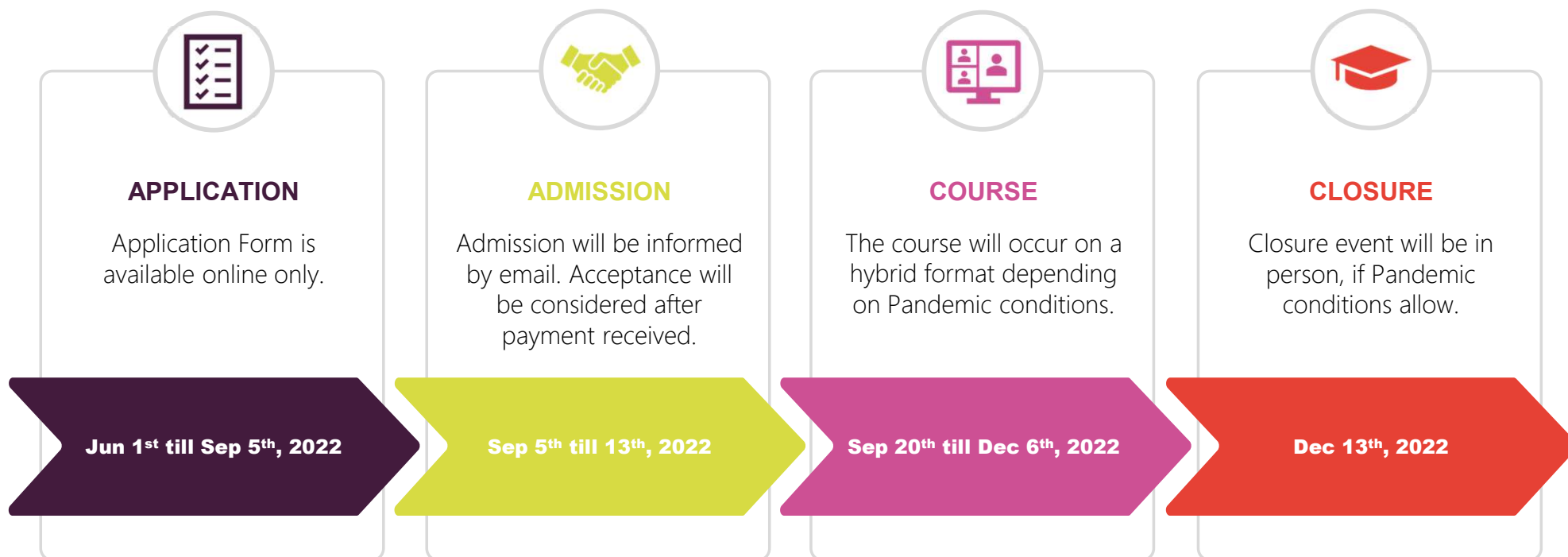
- Keywords: European, Balanced Leadership

Level II: Drucker's Choice

Life design & talent management

NeuroLeadership Program

Level II Life design & talent management – Course Timeline



NeuroLeadership Program

Level II Life design & talent management – Program Structure



- Life Design Approaches to Talent: Principles, Contents, Exercises, Plan
- Sharing Best Practices from Leaders (diversity testimonies from leaders having experience from a wide range of economic sectors)
- Writing a Personal Talent Playbook

Key Contacts

Do you want to become a Team
Member PWN Lisbon Leadership?

MEET OUR TEAM

Contacts:

Ana Maria Ramos Pereira,
Community Manager

contact@pwnlisbon.com

leadership@pwnlisbon.com

The Team



Mónica Rodrigues

*VP Leadership PWN Lisbon
Mindflow Consultant*



Lara Próspero

*Global Director
Microsoft*



Ana Miranda

*CFO
Timber Capital*



Beatriz Seco

*Business Developer at
Mindflow | Comercial
Management Master's
Student*

The Leadership team is formed by key leaders, from different sectors, and with diverse background education.

They are highly committed with the Leadership initiative and contribute to the program as keynote speakers, in areas of their expertise.

Partners



PWN GLOBAL

PWN Global is a **global movement** of people working towards **gender balanced leadership** through professional development and international, cross-industry, on-line and in person **networking**.



+ 3.000 Members

26 Cities

+1.200 events/year

Global Partners



INSEAD
The Business School
for the World®



PWN GLOBAL

WE EXIST TO ADVANCE GENDER BALANCED LEADERSHIP

- Better decision making, economic sustainability and a happier society will exist by **leveraging 100% of the world's talent.**
- Creating a movement of people who **aspire to accelerate the current pace** of change towards gender balanced leadership.
- Connect people via our **unique global network**, inspiring the leaders of today to create exemplary leaders of tomorrow.
- Environment where you, the members of the PWN Global community **can support one another, embrace new skills, learn to speak** out on the topic and create sustainable action plans.



PWN LISBON

PWN Lisbon is a Portuguese branch of PWN Global

- More than 400 members
- Success case on corporate partnerships
- Biggest city network, on par with Paris



PWN LISBON | ACTIVITIES & PROGRAMS

LEADERSHIP



Focused leadership course, with main objective to getting to know the leadership foundations while providing tools, developing skills and sharing successful stories for women who are potential leaders.

MENTORING



By calling upon a **wide range of mentors**, ensuring the best possible match for you, and following up on your progress through the mentoring cycle to ensure that the experience is a positive one.

WOMEN ON BOARD



Specific program for Women on Board that pretends to give a greater visibility and the opportunity to benefit from our different partnerships.

YOUTH



Aims to be the **leading network in Portugal for young women** to find empowering, learning & sharing experiences and connections in the early stage of their professional lives, in order to leverage their career.

ENTREPRENEURSHIP



A hands-on, online **course designed to enrich your personal, professional and business capacities** while leveling and fostering sustainable goals. This program is delivered over an 8 month period and features live webinars and coaching circles.

NETWORKING EVENTS



Wide range of networking events in each city.

PWN Lisbon:

- Inspiring breakfast (once a month)
- Knowledge Workshops (once a month)
- Conversas do Avesso
- Other events
- **Annual Event 2020: Purpose (22/10)**

KNOWLEDGE



The most up to **date news, reports and research** by delivering relevant news from the world of balanced leadership, mentoring and entrepreneurship in this one-stop knowledge hub.

Neuroleadership Program 2022 Edition

JOIN US!

leadership@pwnlisbon.com